

BlackJack



WWW.BLACKJACKBOATS.COM

POWERED BY  **YAMAHA**







@royaiv



@RedFin\_charters



@captaincarlomarino



@jordanne00



@redfishingvenicela



@universityofdularge



@RedFin\_charters



@captain\_jason\_ward



@iamdakari



@BlackJack\_256



@gulf\_to\_bay\_fishing\_charters



@brodyjoiner3



@justindlyons



@Micheli\_25



@cole.tingle



Remember to tag us in your social media photos,  
and follow us on Facebook and Instagram!



# What is a BlackJack Boat?

BlackJack Boats are world-class center-console bay boats, designed and built by the Kenner family in Knoxville, Arkansas. For more than 70 years, the Kenner family has continually stood out in boat design and craftsmanship, culminating in some of the most innovative, elegant, and one of the best performing bay boats.

Find a dealer and schedule a test drive today!

*“BlackJack is truly a great dry ride and takes the rough water better than any other bay boat I have ridden in. The BlackJack gets me to the big fish no matter the weather, keeping me and my customers dry. Their comfort with a smooth ride keeps me focused on what I’m here for: Leading them to the big one.”*

— Capt. Danny Goyen; Victoria, Texas

## Functionality

One reason BlackJack stands out is because of our unique hull design – the “Carolina flare.” This concave design on the front allows the hull to cut into the chop and waves more smoothly, without pounding. Combined with the reverse flare of the hull chines, it serves to turn the spray down and away from the boat, making for a smoother, drier ride in both shallow and deep waters.

## Performance

Every BlackJack boat takes off quickly and smoothly because of its lightweight fiberglass body and 300+ horsepower engine. In fact, Yamaha’s Performance Bulletin reports BlackJack as one of the fastest center-console bay boat on the market.

## Hand-Crafted Quality

Our construction process is simple: start one boat at a time. Every single detail is important, and we are meticulous about every aspect throughout the process. Each piece of a BlackJack boat is assembled by hand, starting with the hull. Once every part and accessory is checked and rechecked, it’s off to the dealer.





## MODEL 224

# *Speed with Style*

Take any fishing trip to the next level of comfort and speed with the BlackJack 224. Representing the ultimate blend of prowess and performance, the 224's sleek and striking design is sure to turn heads out on the water.

From the smooth, dry ride of the "Carolina flare" bow to its classic "tumblehome" transom, the BlackJack 224 blends tradition and technology like no other boat on the market. The hand-laid hull and deck are heavy-duty yet lightweight, and its reverse-angle, spray-reduction chines deflect the water with authority – leaving you so dry, it'll seem like you were never out on the water.

## *Technical Specifications*

**Center-Line Length: 22' 4"**

**Overall Length: 23' 1"**

**Beam: 8' 3"**

**Draft: 12"-14" est.**

**Engine Rating: 300 HP**

**Fuel Capacity: 70 gal.**

**Hull Weight: 1,950 lbs.**





# MODEL 256 BAY

## Comfort with Class

If you're looking to get into bigger, rougher waters, the BlackJack 256 Bay will not only get you there, but it'll get you there in style and comfort. With its larger size, there's lots more storage space for rods, electronics, bait, keepers and so much more. More space means more casting room, and even more room for passengers, making the BlackJack 256 Bay ideal for fishing trips with your buddies or your family – or even both! Plus, every 256 comes with all the standard BlackJack features, such as LED lights, custom upholstery and gas shocks on all hatch lids. The hull itself? It's a work of art, bringing a subtly more aggressive styling to that beautifully unique BlackJack look. When you drive a BlackJack 256 Bay, you leave all other boats in your wake.

## Technical Specifications

Overall Length: 25' 6"
Center-Line Length: 24' 6"
Beam: 8' 6"
Draft: 16" - 18" est.
Engine Rating: 350 HP
Fuel Capacity: 80 gal.
Hull Weight: 2,900 lbs. est.







## MODEL 256 COASTAL

*Go Coastal!*

The BlackJack 256 Coastal is the newest addition to the BlackJack line that combines offshore and bay boat elements to give you a boat that lets you decide how you want to fish on any given day.

Its three-piece design, deeper casting deck and open aft deck give you the ability fish comfortably in bigger waters without sacrificing inshore fishability. Add the optional removable forward seating, and the Coastal quickly converts to a day cruiser perfect for family trips to your favorite sandbar or island.

The BlackJack 256 Coastal has the versatility you need with the style and performance you've come to expect from BlackJack Boats.

### *Technical Specifications*

**Center-Line Length:** 24' 6"

**Overall Length:** 25' 6"

**Beam:** 8' 6"

**Draft:** 16"-18" est.

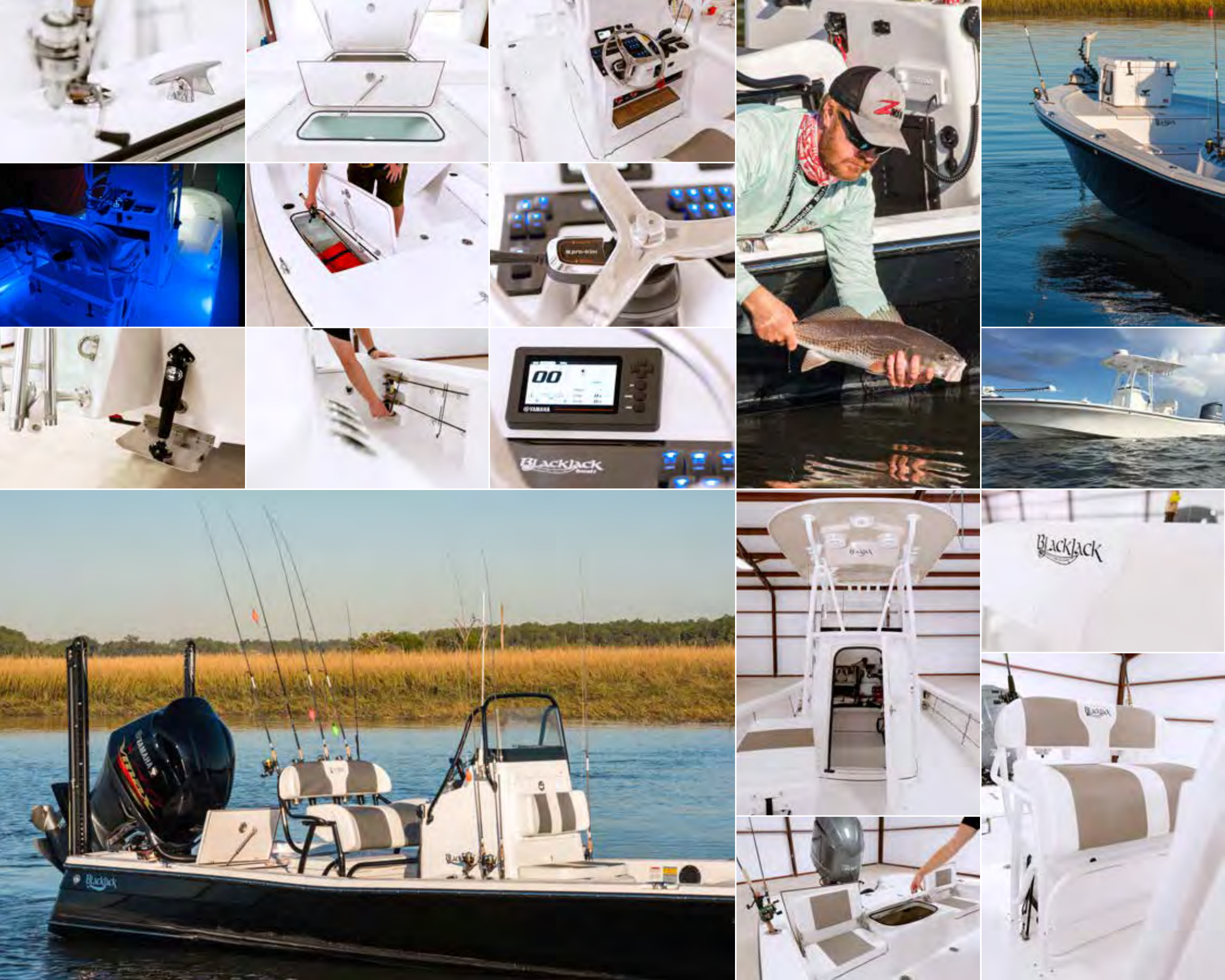
**Engine Rating:** 400 HP

**Fuel Capacity:** 80 gal.

**Hull Weight:** 2,900 lbs. est.







# Features and Options

224	256 B	256 C		224	256 B	256 C	
S	S	S	Structurally all composite	0	0	0	White rub rail with stainless steel insert
S	S	S	Hull bow "Carolina" flare	0	0	0	Powder coated leaning post and handrail (white, ivory or black)
S	S	S	Hull spray rails				
S	S	S	Tumblehome transom design	0	0	0	Boarding ladder (anodized or powder coated)
S	S	S	Non-skid surface pattern	0	0	0	Trim tabs
S	S	S	Under-gunwale rod storage	0	0	0	LED indicator for trim tabs
S	S	-	Locking rod storage	0	0	0	Jack plates
S	S	-	Forward front step with storage and logo	0	0	0	Raw water washdown
S	S	-	Large forward fish box	0	0	0	Fresh water washdown
S	S	S	Recirculated livewells w/ high-speed pickups	0	-	-	Snap-down cushions for front sideboxes
S	S	S	Anodized Elite leaning post w/ fold-down step	0	-	-	Removable aft seat (anodized or powder coated backrest arms)
S	S	S	Console dash				
S	S	S	Console backrest with upholstery logo	-	0	0	Power assist steering
S	S	-	75-quart YETI cooler	0	0	0	Hardtop T-top (anodized or powder coated; solid color or two-tone)
S	S	S	Stainless steel cleats				
S	S	S	Stainless steel rod holders	-	-	0	Removable forward deck seating cushions
S	S	S	Locking hatch lids	-	-	0	Removable backrests for forward deck seating (anodized or powder coated)
S	S	S	O-ring sealed hatch				
S	S	S	Hatch gas shocks	-	-	0	Forward bolster cushions
S	S	S	Hatch stainless steel hinges	-	-	0	Aft bolster cushions
S	S	S	Black rub rail with stainless steel insert				
S	-	-	70-gallon in-floor diurnal EPA approved fuel tank				
S	-	-	Vaulted console with Elite handrail				
S	-	-	Console storage				
-	S	S	82-gallon in-floor diurnal EPA approved fuel tank				
S	S	S	Self-bailing decks				
S	S	-	Elite anodized console handrail				
-	S	S	Forward console door				
-	S	S	Forward console 75-quart YETI cooler seat				
-	S	-	Rear jump seats				
S	S	S	Battery disconnect switch				
-	-	S	Fiberglass leaning post with livewell				
-	-	S	Two forward fish boxes in casting deck				
-	-	S	Large in-floor fish box				

S = Standard Feature    0 = Optional Feature    B = Bay    C = Coastal



A white BlackJack boat with a black hull and a large outboard motor is on a body of water. Three people are on board, fishing. The boat is positioned near a marshy area with tall grass. The text "Highest Quality" is written in a white, cursive font on the left side of the image.

*Highest Quality*

*"BlackJacks are made with backcountry and near-shore fishing in mind. These boats ride better than many larger offshore boats I've owned. They hold the water like they're on rails, and also float and run extremely shallow for a boat of their stature. I tell people that ride is everything, and you should always take a test ride in less than ideal conditions before purchasing. I always say if you test ride a BlackJack today, you'll be listing your boat tomorrow."*

**— Capt. T. Godwin, Naples, Florida**





## Contact and Connect

The BlackJack family is alive and well on social media. Follow us for news, photos, and to hear straight from our satisfied customers!

To find a dealer near you, visit [blackjackboats.com/dealers](http://blackjackboats.com/dealers) today!



BLACKJACKBOATS.COM



@BLACKJACKBOATS



@OFFICIALBLACKJACKBOATS